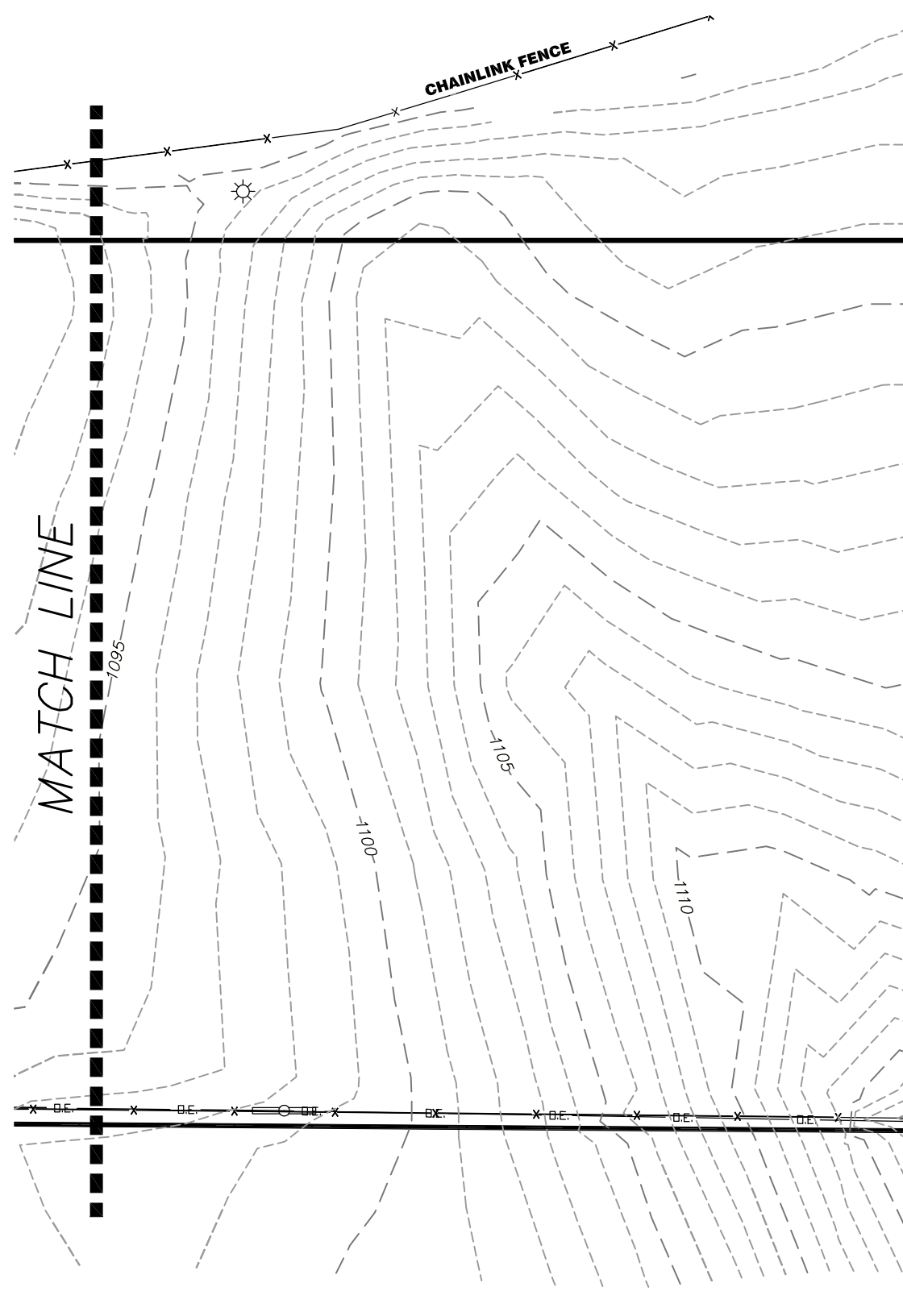
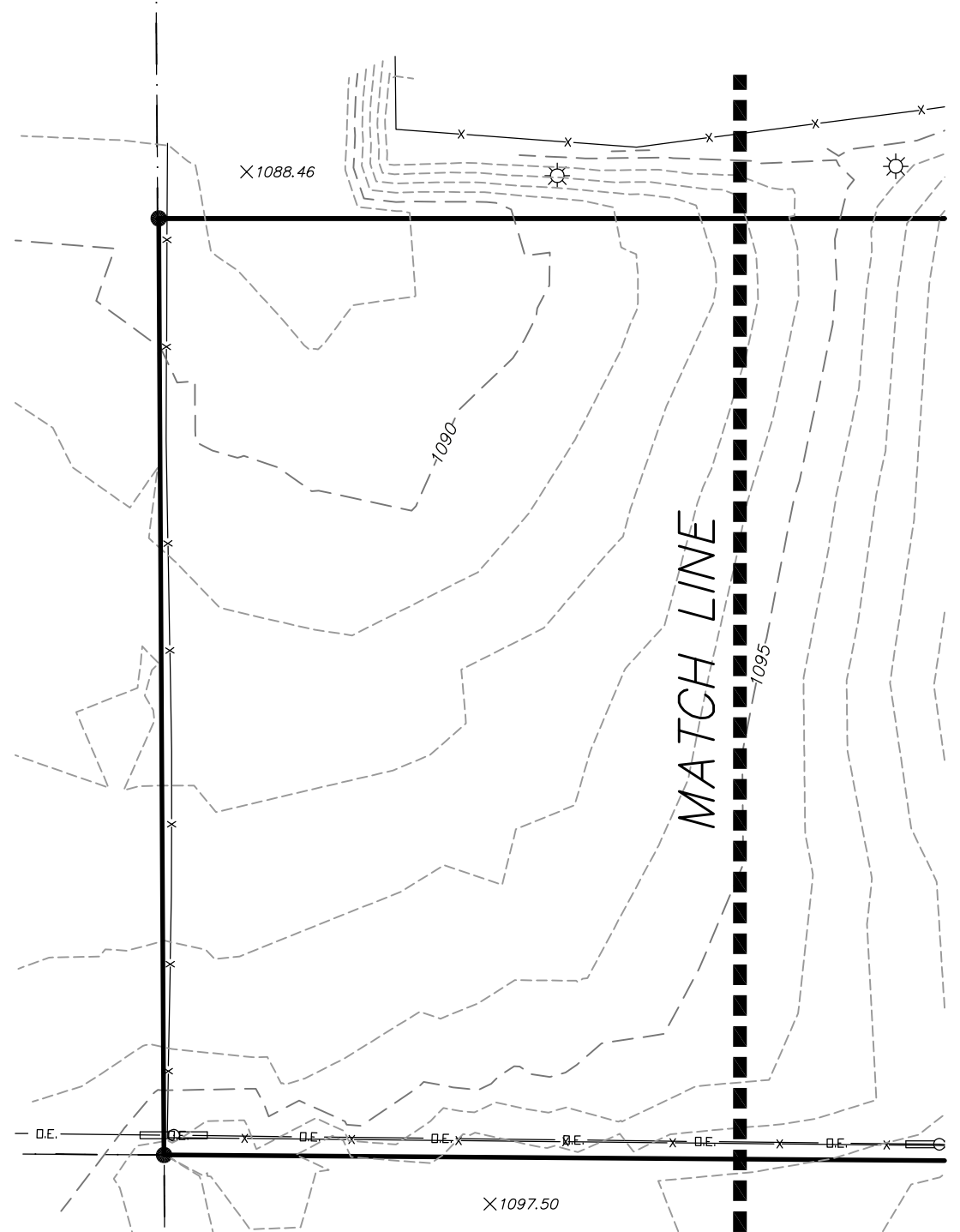
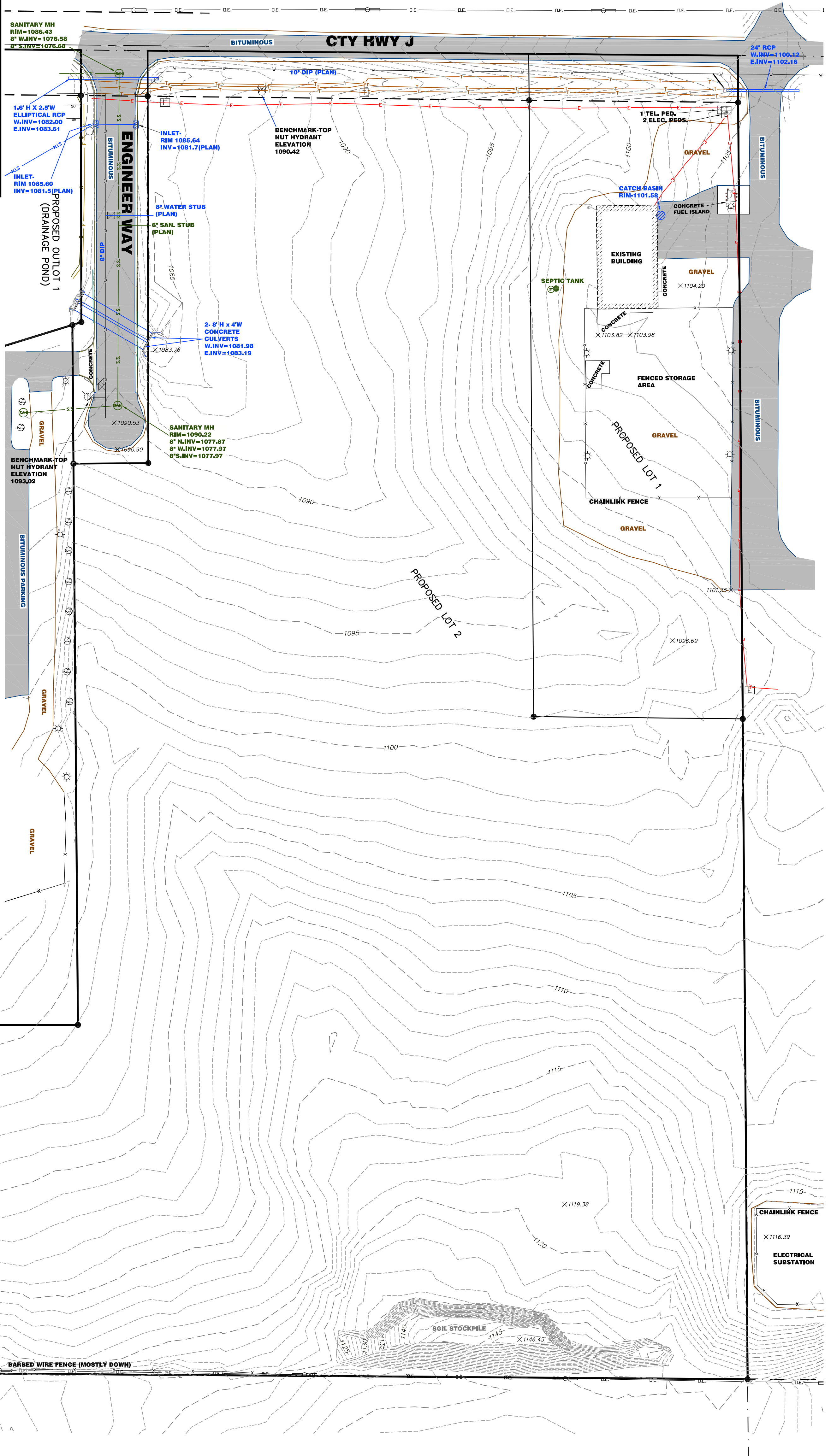
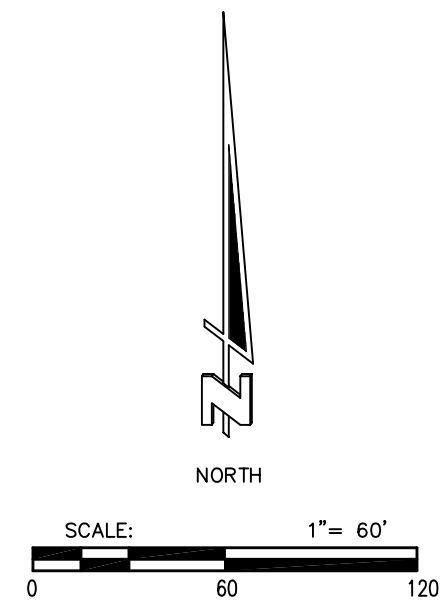


LEGEND

—	PROPERTY LINE	⊗	EXISTING GATE VALVE
- - -	EXISTING 5FT CONTOUR	⊕	EXISTING HYDRANT
- - -	EXISTING 1FT CONTOUR	⊙	EXISTING SANITARY MANHOLE
xxx.xx	EXISTING SPOT ELEVATION	⊕	EXISTING STORM SEWER MANHOLE
—	EXISTING BITUMINOUS EDGE	⊕	EXISTING STORM SEWER INLET
—	EXISTING CURB AND GUTTER	—	EXISTING POWER POLE
—	EXISTING CONCRETE EDGE	⊕	EXISTING TELEPHONE PEDESTAL
* ⊙ ⊕	EXISTING TREES AND BUSHES	⊕	EXISTING ELECTRIC PEDESTAL OR TRANSFORMER
—	EXISTING WATER LINE	⊕	EXISTING LIGHT POLE
—	EXISTING SANITARY SEWER LINE	⊕	EXISTING GAS METER
—	EXISTING STORM SEWER LINE	⊕	TRAFFIC SIGNAL
—	EXISTING UNDERGROUND FIBER OPTICS LINE	⊕	ELECTRIC MANHOLE
—	EXISTING UNDERGROUND GAS LINE	⊕	EXISTING SIGN, TRAFFIC OR PRIVATE
—	EXISTING UNDERGROUND ELECTRIC LINE	●	IRON PIPE MONUMENT
—	EXISTING UNDERGROUND TELEPHONE LINE		
—	EXISTING OVERHEAD ELECTRIC LINE		

Elevation Datum- NAVD 1988 derived from St. Croix County HARN Monuments.



SHEET NO. 1

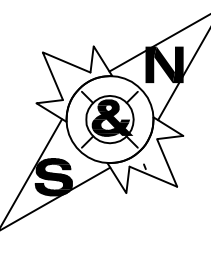
PROJECT:
ST CROIX ELECTRIC
PART OF SEC. 33-T29N,R17W
HAMMOND, WI

TOPOGRAPHIC MAP



CORPORATE OFFICE
406 Technology Drive East
Suite A
Menomonie, WI 54751
Tel 715-232-8490
Fax 715-232-8492
men@authconsulting.com

BRANCH OFFICE
2920 Enloe Street
Suite 101
Hudson, WI 54016
Tel 715-381-5277
Fax 715-381-5338
hudson@authconsulting.com



Auth-Consulting/associates S&N Land Surveying

DRAWN BY:	TRD		
CHECKED BY:			
DATE:	4/27/11		
DWG FILE:	5177-003		
REF FILE:			
JOB NUMBER:	5177-003	REVISION DESCRIPTION:	NAME: DATE: