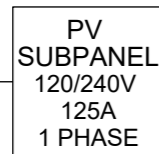
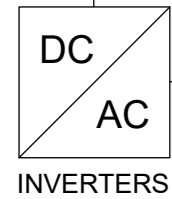
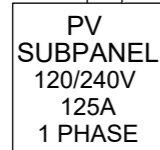
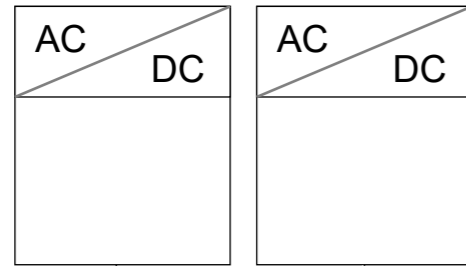
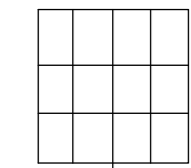


GRID ARRAY

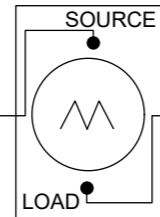
HOME EXTERIOR

INSIDE

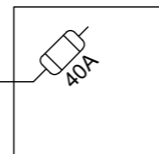
SOLAR ARRAY



ST CROIX ELECTRIC COOPERATIVE PRODUCTION METER 120/240V, 200A WITH BYPASS, 1-PHASE, 3-WIRE



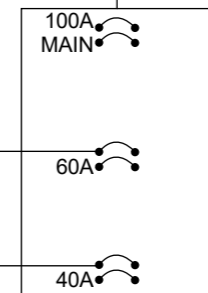
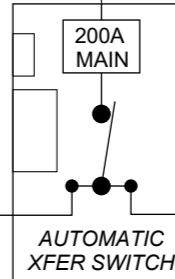
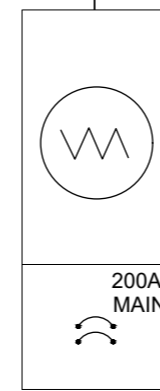
UTILITY PV AC DISCONNECT VISIBLE-OPEN TYPE, LOCKABLE, READILY ACCESSIBLE



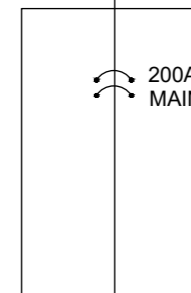
2' MAX

TO UTILITY

ST CROIX ELECTRIC COOPERATIVE BI-DIRECTIONAL METER 120/240V 1-PHASE 3-WIRE



GENERATION PANEL 120/240V 125A 1 PHASE



MAIN LOAD PANEL 120/240V 200A RATED BUS

CONDUIT BETWEEN PRODUCTION METER, FUSED DISCONNECT AND BI-DIRECTIONAL METER MUST BE VISIBLE AND NO FURTHER APART THAN 2 FEET MAXIMUM.

1. DESIGN MEETS NEC CODE AND SHALL BE INSTALLED IN ACCORDANCE WITH NEC 690 AND POSTED WITH APPLICABLE WARNINGS, SIGNAGE, AND PLAQUES PER NEC 705-10, 690-17, & 690-64 (b) (5)

2. SOLAR MODULES, INVERTERS, AND CORRESPONDING ELECTRICAL EQUIPMENT ARE LISTED.

3. INVERTERS ARE UL 1741 LISTED

REVISIONS

LAST: 5/01/24 PM

ELECTRICAL LINE DIAGRAM

*DISTANCES NOT TO SCALE